

WHERE GENERAL SERVICE OFFTAKE IS REQUIRED BEFORE TESTABLE SINGLE CHECK VALVE:

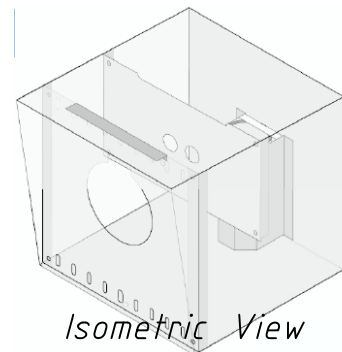
- LENGTH OF FLOW STRAIGHTENER SHALL BE  $3.5 \times$  PIPE DIAMETER PLUS AN ADDITIONAL 100mm
- PLACE CENTER OF GENERAL SERVICE OFFTAKE MINIMUM  $3.5 \times$  PIPE DIAMETER AFTER MAGFLO.
- PROVIDE BACKFLOW PREVENTION TO AS3500 ON GENERAL SERVICE.

M A T E R I A L S		
ITEM	QUANT.	DESCRIPTION
1	1	METER - SIEMENS SITRANS MAGFLO WITH SECURITY COVER, EARTHING STRAPS AND EARTHING RINGS IS SHOWN
2	2	FLOW STRAIGHTENER - CLEAR INTERNAL BORE PIPE, FLANGE TO UNIFLANGE/COP-A-MATE
3	1	TESTABLE SINGLE CHECK VALVE
4	2	RESILIENT SEATED GATE VALVE OR GEAR OPERATED BUTTERFLY VALVE (HANDWHEEL CLOSEST TO BOUNDARY TO BE CHAINED AND PADLOCKED.)
5	4	90° ELBOW, FLANGE TO FLANGE
6	2	CONNECTOR FLANGE TO FLANGE
7	2	100mm CONCRETE SLAB (50MM ABOVE GROUND SURFACE)
8	2	ADJUSTABLE PIPE SUPPORT

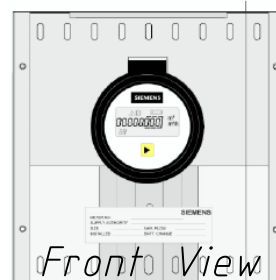
TABLE A			
MAGFLO DIAMETER (mm)	MAGFLO LENGTH (mm)	MINIMUM DISTANCE (mm)	
		Distance 'A'	Distance 'B'
50	200	250	150
80	200	400	240
100	250	500	300
150	300	750	450

#### NOTES

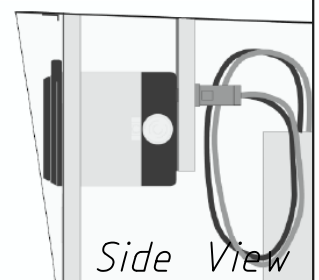
- DUCTILE IRON FLOW STRAIGHTENER - INSTALL UNI-FLANGE EITHER SIDE OF MAGFLO WITH GASKETS  
COPPER FLOW STRAIGHTENER - INSTALL COP-A-MATE FLANGE EITHER SIDE OF MAGFLO WITH GASKETS.
- ASSEMBLY SHALL BE LEVEL (MAGFLO ELECTROMAGNETIC SENSORS MUST ALWAYS BE IMMERSSED TO MEASURE ACCURATELY).
- METER SIZE AND TYPE:
  - 32mm AND 40mm SHALL BE MECHANICAL (Supplied by Wannon Water at owners cost).
  - 50mm AND ABOVE SHALL BE SIEMENS SITRANS MAGFLO (Supplied by Wannon Water at owners cost).
- MAGFLO FLANGES CONFORM TO AS4087 PN16.
- DI, DIEL, COPPER OR ROLL GROOVE PIPE MAY BE USED.
- BACKFLOW DEVICES MUST BE INSTALLED TO MEET AS/NZS 3500.1.2
- CONCRETE SLAB SHALL BE 100mm THICK (50mm ABOVE FINISHED SURFACE) AND EXTEND 300mm OUTSIDE INSTALLATION IN ALL DIRECTIONS.
- APPLY DENSO TAPE TO BELOW GROUND FASTENERS & AT HIGHLY CORROSIVE LOCATIONS.
- ASSEMBLY MAY BE PLACED IN PIT PROVIDED FOLLOWING CLEARANCE REQUIREMENTS ARE MET:
  - 5 x Pipe Dia for walls (Minimum 400mm)
  - 300mm for floor
  - 50-75mm for lid
- WHERE LOW OR MEDIUM RISK ASSEMBLY IS PROPOSED TO BE CONTAINED IN A CONCRETE PIT AND WILL NOT BE EASILY OR SAFELY ACCESSIBLE, THE MAGFLO METER SHALL BE A BATTERY POWERED UNIT WITH REMOTE SIGNAL CONVERTER MOUNTED IN A LOCKABLE PROTECTION COVER FIELD BOX AS CLOSE TO PROPERTY BOUNDARY AS IS PRACTICABLE.
- RESILIENT SEATED TESTABLE SINGLE CHECK VALVE & ASSOCIATED GATE VALVE OR GEARED BUTTERFLY VALVE CAN BE OMITTED FOR FIRE SERVICES INCORPORATING A BOOSTER WITH A TESTABLE SINGLE CHECK VALVE. THE BOOSTER ASSEMBLY MUST BE NO MORE THAN 5M FROM THE PROPERTY FRONTAGE OR MAGFLO METER.
- INSULATED FLANGE TO BE USED FOR CONNECTION OF DISSIMILAR METALS.



Isometric View



Front View



Side View

ABOVE: BATTERY POWERED MAGFLO METER WITH REMOTE SIGNAL CONVERTER MOUNTED IN A 316 STAINLESS STEEL LOCKABLE PROTECTION COVER FIELD BOX (BY SIEMENS) AS PER NOTE 10

Designed by K.WATSON	Checked by I.BAUM	Approved by - date 25/06/12	Date 24/04/12	Scale N.T.S.
GENERAL/FIRE SERVICE / BULK METER AND PIPEWORK SHALL BE LOCATED IN THE COMMON PROPERTY OF OWNERS CORPORATION		TYPICAL LOW RISK GENERAL/FIRE SERVICE WATER SUPPLY CONNECTION ASSEMBLY		
		WW-10-012	Edition 5	Sheet 1/3