

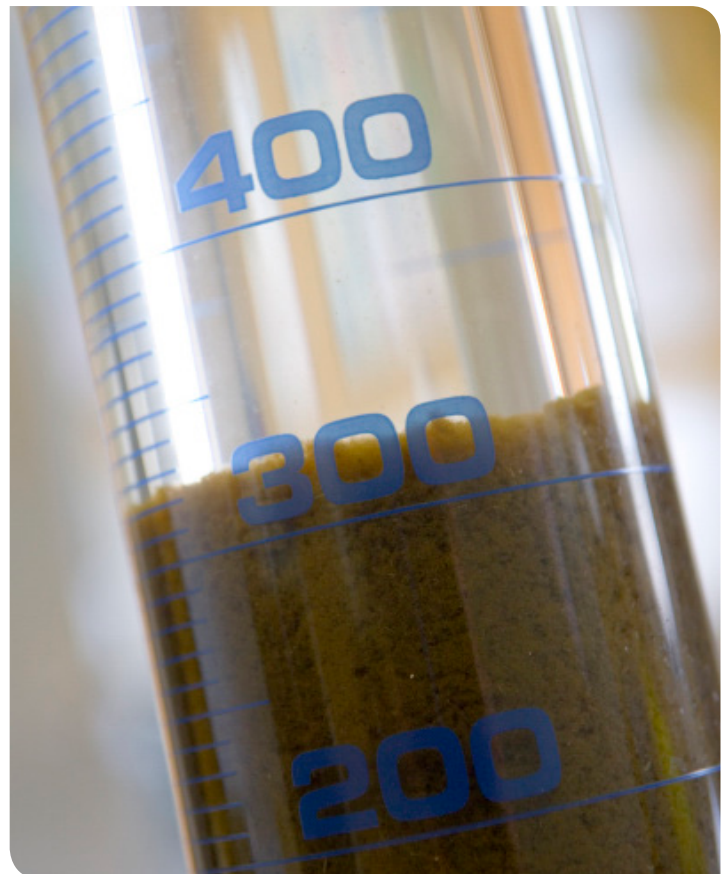
Water Reclamation - Cobden Water Reclamation Plant

The Cobden Water Reclamation Plant is located east of the town and treats sewage from residential customers in the Cobden region.

The first step of the reclamation process is a bar screen that removes large items and rubbish. This rubbish is then collected and washed before being disposed. Sewage then flows to a primary lagoon where it is mechanically aerated over a 24-hour period. The aeration in the primary lagoon allows micro-organisms to reproduce and consume the organic matter in the sewage. The micro-organisms assist in the overall reclamation process by consuming nutrients and other pollutants in the sewage.

Following the primary lagoon process, sewage is pumped to a maturation lagoon, where it is stored for approximately 20 days. The maturation lagoon has a capacity of 16 megalitres and allows any remaining particles to settle to the bottom before entering winter storage.

The treated sewage is then held in the winter storage lagoon, which holds up to 90 megalitres and is the main holding point before water is reused for nearby farming practices.



Testing sewage quality as part of the reclamation process



Cobden Water Reclamation Plant

2012/13 Volume Treated Sewage:	180ML
Number of Connections:	722
Storage Capacity:	110ML
Type of Treatment Used:	Maturation Ponds

IML = One Million Litres

